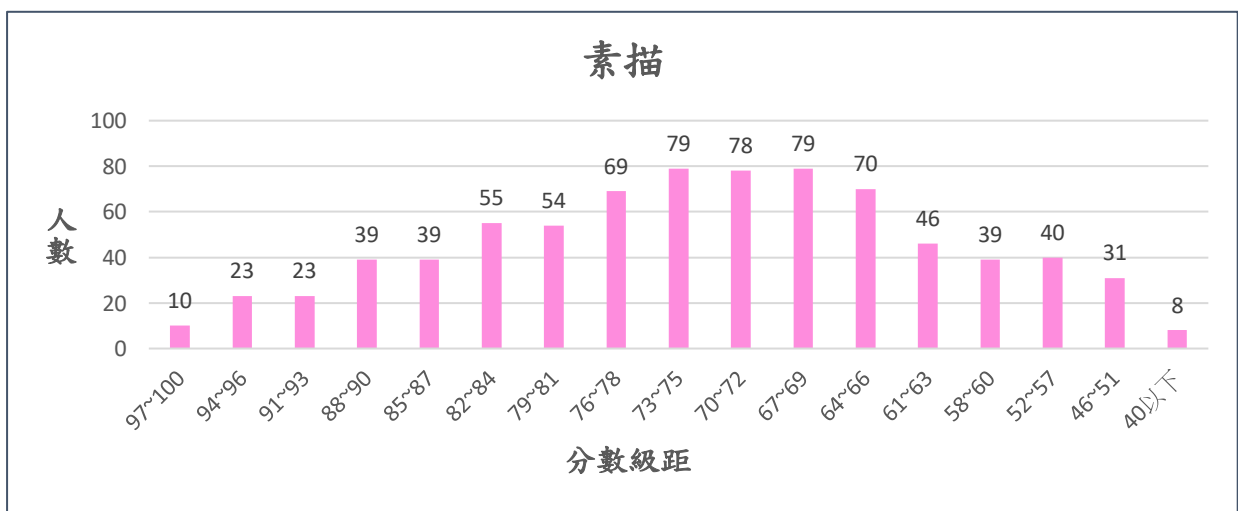


**臺灣北區 113 學年度高級中等學校美術班特色招生甄選入學  
聯合術科測驗單科成績人數級距表**

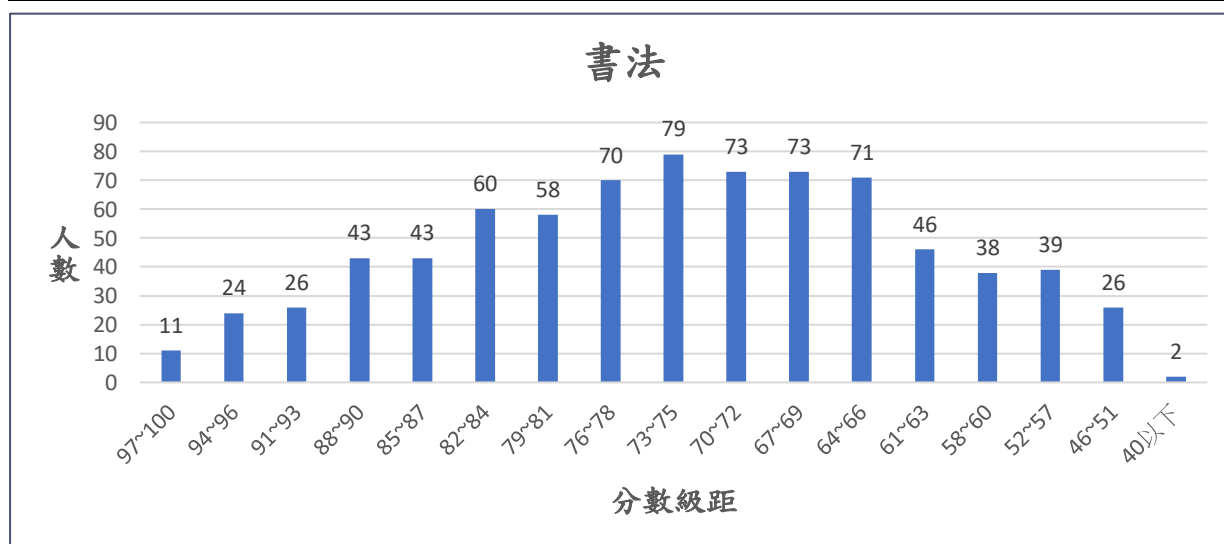
**一、素描成績人數級距表**

分數	人數	比例	累計	累計比例
97~100	10	1.28%	10	1.28%
94~96	23	2.94%	33	4.22%
91~93	23	2.94%	56	7.16%
88~90	39	4.99%	95	12.15%
85~87	39	4.99%	134	17.14%
82~84	55	7.03%	189	24.17%
79~81	54	7.16%	245	31.07%
76~78	69	8.82%	314	39.90%
73~75	79	9.97%	392	50.00%
70~72	78	9.97%	470	59.97%
67~69	79	9.97%	548	70.08%
64~66	70	8.95%	618	79.03%
61~63	46	6.01%	665	84.91%
58~60	39	4.99%	704	89.90%
52~57	40	4.99%	743	95.01%
46~51	31	3.96%	774	98.98%
40 以下	8	1.02%	782	100.00%
<b>缺考</b>	<b>30</b>			
<b>總人數</b>	<b>812</b>		<b>平均</b>	<b>71.47</b>



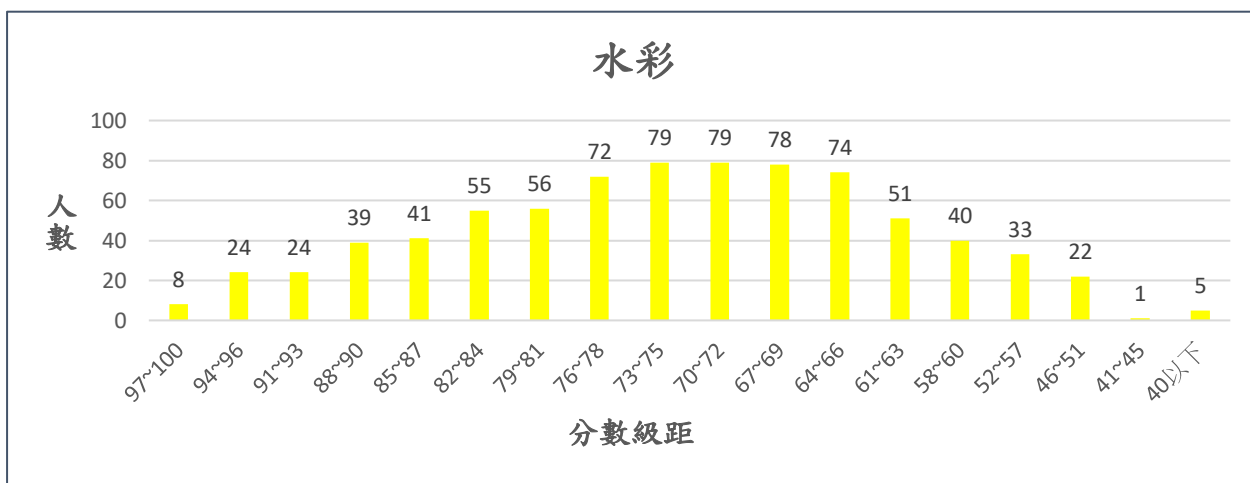
## 二、書法成績人數級距表

分數	人數	比例	累計	累計比例
97~100	11	1.41%	11	1.41%
94~96	24	3.07%	35	4.48%
91~93	26	3.32%	61	7.80%
88~90	43	5.50%	104	13.30%
85~87	43	5.50%	147	18.80%
82~84	60	7.67%	207	26.47%
79~81	58	7.42%	265	33.89%
76~78	70	8.95%	335	42.84%
73~75	79	10.10%	414	52.94%
70~72	73	9.34%	487	62.28%
67~69	73	9.34%	560	71.61%
64~66	71	9.08%	631	80.69%
61~63	46	5.88%	677	86.57%
58~60	38	4.86%	715	91.43%
52~57	39	4.99%	754	96.42%
46~51	26	3.32%	780	99.74%
40 以下	2	0.26%	782	100.00%
<b>缺考</b>	<b>30</b>			
<b>總人數</b>	<b>812</b>		<b>平均</b>	<b>72.35</b>



### 三、水彩成績人數級距表

分數	人數	比例	累計	累計比例
97~100	8	1.02%	8	1.02%
94~96	24	3.07%	32	4.10%
91~93	24	3.07%	56	7.17%
88~90	39	4.99%	95	12.16%
85~87	41	5.25%	136	17.41%
82~84	55	7.04%	191	24.46%
79~81	56	7.17%	247	31.63%
76~78	72	9.22%	319	40.85%
73~75	79	10.12%	398	50.96%
70~72	79	10.12%	477	61.08%
67~69	78	9.99%	555	71.06%
64~66	74	9.48%	629	80.54%
61~63	51	6.53%	680	87.07%
58~60	40	5.12%	720	92.19%
52~57	33	4.23%	753	96.41%
46~51	22	2.82%	775	99.23%
41~45	1	0.13%	776	99.36%
40 以下	5	0.64%	781	100.00%
<b>缺考</b>	<b>31</b>			
<b>總人數</b>	<b>812</b>		<b>平均</b>	<b>71.96</b>



#### 四、水墨成績人數級距表

分數	人數	比例	累計	累計比例
97~100	8	1.03%	8	1.03%
94~96	23	2.95%	31	3.97%
91~93	24	3.08%	55	7.05%
88~90	39	5.00%	94	12.05%
85~87	39	5.00%	133	17.05%
82~84	55	7.05%	188	24.10%
79~81	56	7.18%	244	31.28%
76~78	69	8.85%	313	40.13%
73~75	80	10.26%	393	50.38%
70~72	74	9.49%	467	59.87%
67~69	78	10.00%	545	69.87%
64~66	70	8.97%	615	78.85%
61~63	48	6.15%	663	85.00%
58~60	39	5.00%	702	90.00%
52~57	39	5.00%	741	95.00%
46~51	31	3.97%	772	98.97%
40 以下	8	1.03%	780	100.00%
<b>缺考</b>	<b>32</b>			
<b>總人數</b>	<b>812</b>		<b>平均</b>	<b>72.60</b>

